

# Tech innovation that will power the travel industry

---

Alex Morriss, Director,  
Expedia Affiliate Network



# The Expedia group at a glance



Largest travel company  
**\$88B** gross bookings



**\$10.1B revenue** growing  
**>2X faster** vs. industry



**675M+** monthly site visits



**75+** countries served



**Nearly 2M** lodging options  
for travelers



**22K+** employees globally





Unlock the **power of**  
**Expedia** for partners.

# Our key verticals



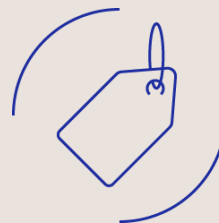
**Online Travel  
Agency**



**Loyalty and  
Membership**



**Corporate Travel  
Agent**



**Offline Retail  
Agent**



**Airline**



# Latest technology



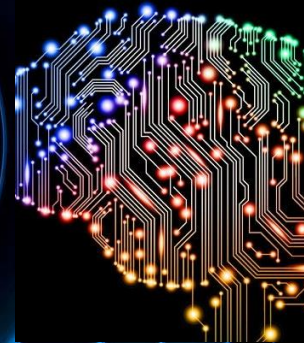
**Mobile**



**Voice**



**Chatbots**



**Machine  
Learning A.I.**

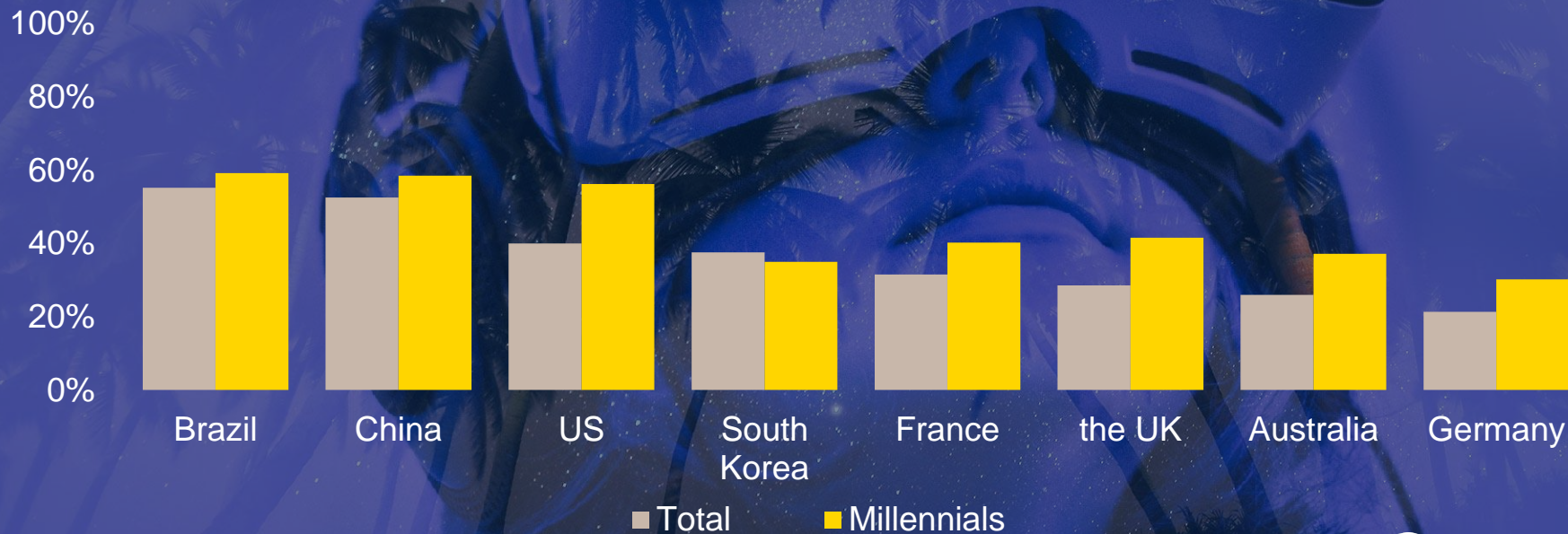


**Driverless  
Cars**





“ I would like to use virtual reality (VR e.g. Oculus Rift) to discover holiday destinations... ”



# Augmented Reality's Travel Moment?





# Pattern Recognition

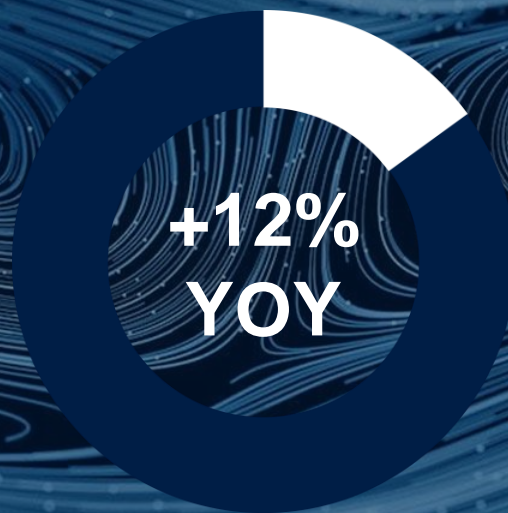
10110  
01011



# Investing in R&D

**\$1.3B**

invested in tech



We are focused on tech innovation and advancing our platforms and functionality





## Dynamic and rich property content

EAN Rapid delivers over 400,000 accommodations with competitive rates and availabilities and the richest content to travellers.



## RESTful API (with enhanced capabilities)

A quick and intuitive API, its modular format allows for versatility to suit your travel business.



## Partner support & developer tools

Our partner-focused approach is long-term; supporting you through integration, optimization and business growth.

# EAN images

All EAN images come with clear and distinct captions.  
We offer over 175 different captions.



**Over 13 million**  
property images



**Over 7.5 million**  
room images



**Over 85%**  
are large scale (1000px)





**Hotel**



**House boat**



**Bed & Breakfast**



**Castle**



**Hotel Resort**



**Villa**



**Treehouse**



**Ranch**



**Riad**



**Cabin**



**Ryokan**



**Chalet**



**Safari**

**Over  
35**

**different property types**

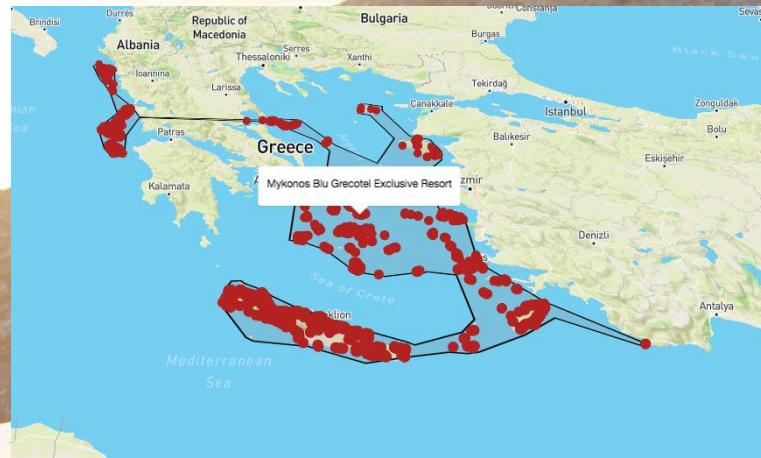
across 25,000+ destinations for all  
different traveler needs

# Intelligent geography

## Matching geography to where travelers want to stay

Simple yet detailed geography in key areas with **over 400,000 geography definitions** including:

- Points of interest
- Multi-city vicinity
- Neighborhood
- ...and more



Search by 'Greek Islands'





# Thank you

© 2018 Expedia, Inc. All rights reserved.



Expedia Affiliate  
Network